

## REPLACEMENT PARTS — ADAPTER/HOLDER

### STRAIGHT ADAPTER FOR ER COLLETS

ØD	Adapter Standard	Tool No.	B	Ød	Collet Standard
50(2")	—	HO-100	55(2-5/32")	20(7/8")	ER32
63(2-1/2")	—	HO-104	55(2-5/32")	25(1")	ER40

### STRAIGHT ADAPTER FOR ER32 COLLETS

ØD	Adapter Standard	Tool No.	B	Collet Standard
50(2")	M2	HO-108	60(2-3/8")	ER32

### ISO TOOL HOLDER WITH PULL STUD FOR MORBIDELLI & SCM MACHINES

ØD	Adapter Standard	Tool No.	B	Collet Standard
50(2")	ISO30	HO-112	55(2-5/32")	ER32

### ISO TOOL HOLDER

D	Adapter Standard	Tool No.	B	Collet Standard
50(2")	ISO30	HO-116	50(2")	ER32
63(2-1/2")	ISO30	HO-120	55(2-5/32")	ER40
50(2")	ISO40	HO-124	63(2-1/2")	ER32
63(2-1/2")	ISO40	HO-128	73(2-7/8")	ER40

### HSK TOOL HOLDER

ØD	Adapter Standard	Tool No.	B	Collet Standard
50(2")	HSK63F	HO-132	68(2-11/16")	ER32
63(2-1/2")	HSK63F	HO-136	68(2-11/16")	ER40

### ISO TOOL HOLDER WITH ARBOR FOR MORBIDELLI MACHINES\*

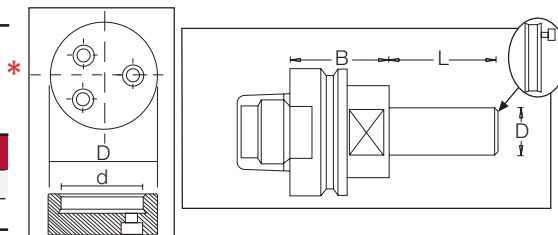
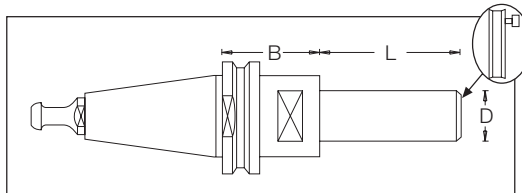
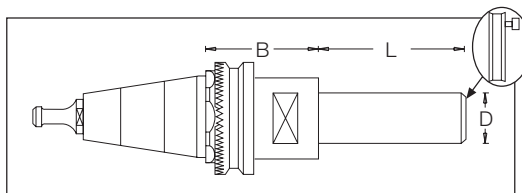
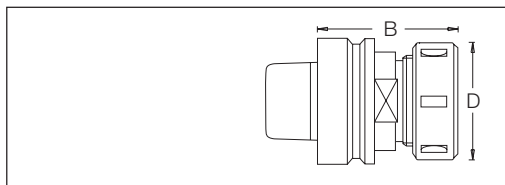
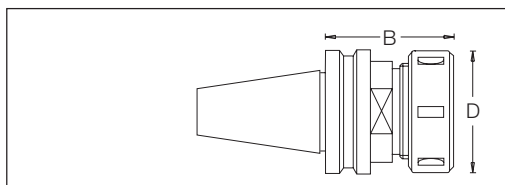
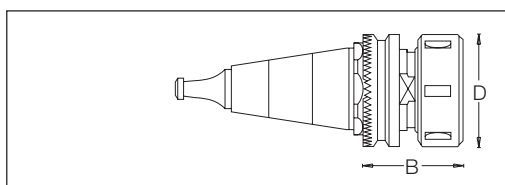
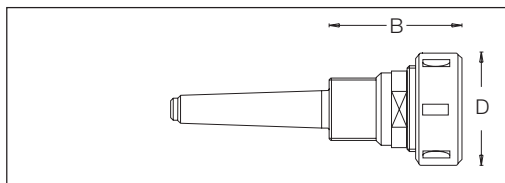
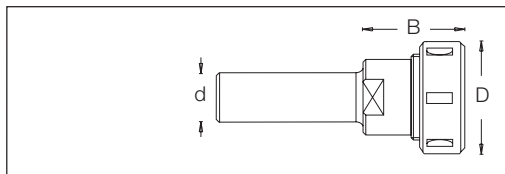
ØD	Adapter Standard	Tool No.	B	L
30(1-3/16")	ISO30	HO-140	35(1-3/8")	70(2-3/4")
30(1-3/16")	ISO30	HO-144	35(1-3/8")	100(4")

### ISO TOOL HOLDER WITH ARBOR\*

ØD	Adapter Standard	Tool No.	B	L
30(1-3/16")	ISO30	HO-148	35(1-3/8")	70(2-3/4")
30(1-3/16")	ISO30	HO-152	35(1-3/8")	100(4")

### HSK TOOL HOLDER WITH AN ARBOR\*

ØD	Adapter Standard	Tool No.	B	L
30(1-3/16")	HSK63F	HO-156	33(1-5/16")	70(2-3/4")
30(1-3/16")	HSK63F	HO-160	33(1-5/16")	100(4")



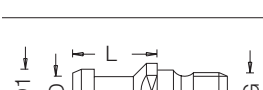
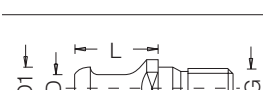
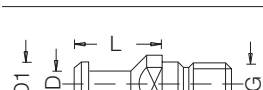
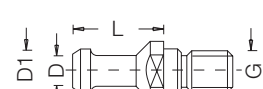
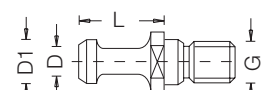
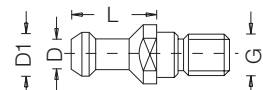
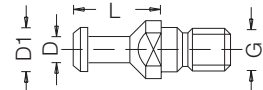
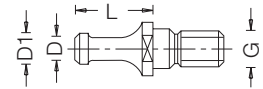
\*Fixing flange on arbor supplied with screws.



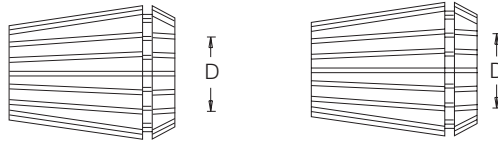
## REPLACEMENT PARTS — RETAINING STUD FOR MACHINES



Machine	ØD1	ØD	Tool No.	Adapter	L	G
Morbidelli, SCM	8.5(11/32")	6.5(1/4")	<b>CO-300</b>	ISO30	22(7/8")	M10
Busellato, Weeke, Bulleri, Maka	13(1/2")	9(3/8")	<b>CO-304</b>	ISO30	24(15/16")	M12
Cosmec, Reichenbacher	19(3/4")	14(9/16")	<b>CO-308</b>	ISO40	26(1-1/32")	M16
Alberti, Vitap, Masterwood	13(1/2")	9(3/8")	<b>CO-312</b>	ISO30	24(15/16")	M12
Esseteam	12(15/32")	8(5/16")	<b>CO-316</b>	ISO30	24(15/16")	M12
CMS	12.8(1/2")	9(3/8")	<b>CO-320</b>	ISO30	24(15/16")	M12
Belotti	13(1/2")	9(3/8")	<b>CO-324</b>	ISO30	23(15/16")	M12
Biesse	13(1/2")	9(3/8")	<b>CO-328</b>	ISO30	24(15/16")	M12
Biesse, Masterwood	12(15/32")	8(5/16")	<b>CO-332</b>	ISO30	24(15/16")	M12
Komo	13(1/2")	9(3/8")	<b>CO-336</b>	BT30	24(15/16")	M12
Shoda (BT30-BT40), Heian (BT35)	11(7/16")	7(9/32")	<b>CO-340</b>	BT30	23(15/16")	M12
	13(1/2")	8.5(11/32")	<b>CO-344</b>	BT35	28(1-1/8")	M12
	15(19/32")	10(13/32")	<b>CO-348</b>	BT40	35(1-3/8")	M16



## REPLACEMENT PARTS — COLLETS FOR ER32 NUT & ER40 NUT



ØD	ER32 Tool No.	ER40 Tool No.
2-3	CO-100	-
3-4	CO-104	CO-200
4-5	CO-108	CO-202
5-6	CO-112	CO-204
6-7	CO-116	CO-206
7-8	CO-120	CO-208
8-9	CO-124	CO-210
9-10	CO-130	CO-212
10-11	CO-134	CO-214
11-12	CO-138	CO-216
12-13	CO-142	CO-218
13-14	CO-146	CO-220
14-15	CO-150	CO-222
15-16	CO-154	CO-224
16-17	CO-158	CO-226
17-18	CO-162	CO-228
18-19	CO-166	CO-230
19-20	CO-170	CO-232
20-21	—	CO-234
21-22	—	CO-236
22-23	—	CO-238
23-24	—	CO-240
24-25	—	CO-242
25-26	—	CO-244
1/4"	CO-174	CO-246
3/8"	CO-178	CO-248
1/2"	CO-182	CO-250
5/8"	CO-186	CO-252
3/4"	CO-190	CO-254



## REPLACEMENT PARTS — KEY

ØD	Tool No.
For ER32 nut	WR-100
For ER40 nut	WR-104



For CNC Collets see page 146.