

# Replacement Parts for Shaper Cutters



Rabbeting



Profiling



Door Making



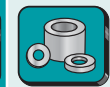
Grooving



Joining



Lamello®



ACCESSORIES

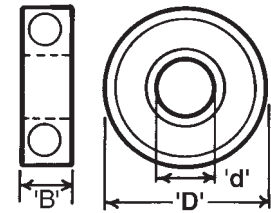
## BALL BEARING RUB COLLARS FOR SHAPER CUTTERS

Designed for template shaping such as arched or cathedral doors, etc. Features a ball bearing center with a steel sleeve and is available with either 1/2", 3/4" and 1-1/4" inside diameter. Please see page 281 for additional rub collars.



### FOR 1/2", 3/4" & 1-1/4" DIAMETER SPINDLES

Ød	ØD(mm/Inch)	Tool No.	B	Use for Amana Tool® No.
1/2	0.874 (7/8)	C-001	5/32	SC600
1/2	1.125 (1-1/8)	*47800	5/16	
1/2	1.250 (1-1/4)	C-002	5/32	SC602, SC604, SC606
1/2	1.374 (1-3/8)	C-003	5/32	
1/2	1.500 (1-1/2)	*47806	5/16	993
3/4	1.457	C-043	9.5mm	939, SC624, SC642
3/4	1.500 (1-1/2)	C-044	9.5mm	977
3/4	1.625 (1-5/8)	C-005	7/16	905, 950, 906, 929, 930, SC626, SC636, SC638, SC650, SC652, SC654, SC656, SC658
3/4	1.687 (1-11/16)	*47810	7/16	957,
3/4	1.750 (1-3/4)	C-006	7/16	900, 901, 968, 969, 980, 998, 991, SC410, SC412 SC414, SC416, SC630, SC640, SC646
3/4	1.811	C-007	7/16	965, SC442, SC444, SC446, SC582, SC592
3/4	1.874 (1-7/8)	C-008	7/16	921, 922, 927, 928, 932, 938, 940, 945, 952, 958, 994, SC554, SC558, SC590, SC634, SC648,
3/4	1.937 (1-15/16)	C-004	7/16	964, SC400, SC402, SC404, SC406, SC408
3/4	1.964	C-009	7/16	SC440, SC460
3/4	2.000	C-010	7/16	902, 903, 904, 951, 966, SC442, SC644, SC446
3/4	2.063	C-022	7/16	922
3/4	2.031 (2-1/32)	C-039	7/16	SC585
3/4	2.106	C-023	7/16	992
3/4	2.125 (2-1/8)	C-011	7/16	905, 925, 926, 959, 999, SC618, SC640
3/4	2.153	C-024	7/16	975, 976
3/4	2.187 (2-3/16)	*47820	7/16	
3/4	2.216	C-012	7/16	SC444
3/4	2.250 (2-1/4)	C-025	7/16	972, 974, SC628
3/4	2.272	C-013	7/16	
3/4	2.295	C-014	7/16	933, SC616, SC441
3/4	2.311	C-026	7/16	911
3/4	2.375 (2-3/8)	C-015	7/16	960, 961, 971, 973, SC620, SC622
3/4	2.425	C-027	7/16	962
3/4	2.468	C-028	7/16	960, 961
3/4	2.500 (2-1/2)	C-016	7/16	940, 945, 986-VC, 985-VC, 994
3/4	2.555	C-029	7/16	934, 935, 936, 937
3/4	2.625 (2-5/8)	*47822	7/16	984-VC, 987-VC, SC430, SC432
3/4	2.733	C-030	7/16	967
3/4	2.937 (2-15/16)	*47824	7/16	
1-1/4	1.850	C-045	9mm	989
1-1/4	2.000	C-050	9mm	SC532, SC534, SC536
1-1/4	2.165	C-051	1/2	SC680, SC682
1-1/4	2.312 (2-5/16)	C-040	9mm	SC593
1-1/4	2.375 (2-3/8)	C-041	1/2	924
1-1/4	2.500 (2-1/2)	C-017	1/2	931, 984, 985, 985-LH, 986, 987, A-30-114, A-30-116, A-30-118, A-30-120, SC420, SC422, SC426, SC500, SC502, SC504, SC506, SC508, SC509, SC510, SC511, SC512, SC514, SC516, SC520, SC522, SC524, SC526, SC528, SC530, SC556, SC559, SC580, SC617
1-1/4	2.531	C-018	1/2	SC584, SC594
1-1/4	2.562 (2-9/16)	C-042	1/2	924
1-1/4	2.688	C-019	1/2	SC424, SC540, SC542, SC544, SC546, SC548, SC550, SC560, SC562, SC564,
1-1/4	2.750 (2-3/4)	C-031	1/2	A-30-112
1-1/4	2.874 (2-7/8)	C-020	1/2	SC542, SC546, SC548
1-1/4	2.948	C-046	1/2	SC660
1-1/4	3.000	C-032	1/2	A-28-108, A-29-108, A-30-110
1-1/4	3.090	C-021	1/2	SC540, SC544, SC550
1-1/4	3.027	C-047	1/2	SC662
1-1/4	3.106	C-048	1/2	SC464, SC664
1-1/4	3.185	C-049	1/2	SC462, SC666
1-1/4	3.250 (3-1/4)	C-033	1/2	A-28-106, A-29-106, A-30-108
1-1/4	3.375 (3-3/8)	C-034	1/2	A-30-106
1-1/4	3.500 (3-1/2)	C-035	1/2	A-28-104, A-29-104, A-30-104
1-1/4	3.555	C-036	1/2	A-32-100, A-32-200, A-32-400
1-1/4	3.625 (3-5/8)	C-037	1/2	A-28-102, A-29-102, A-30-102
1-1/4	3.750 (3-3/4)	C-038	1/2	A-28-100, A-29-100, A-30-100



REPLACEMENT PARTS

\*Includes 2 steel shims .007" (#55358); Rub collar shim (#55358)



Rabbeting



Profiling



Door Making



Grooving



Jointing



Lamello®



ACCESSORIES

# Replacement Parts for Shaper Cutters



## BALL BEARING RUB COLLARS

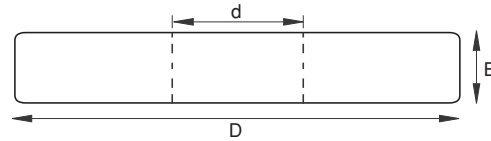
### FOR 3/4", 1", 1-1/4" & 30mm SPINDLE SHAPERS

Designed for template shaping such as arched or cathedral doors, etc. Features a steel ball bearing center and interchangeable, lightweight aluminum rub collar sleeves. To order, specify rub collar (example: #61600, 75mm), and then order the correct size retaining bearing to fit your spindle. The bearing includes a special steel retaining collar that properly secures the assembly to your spindle (3/4", 1", 1-1/4" or 30mm).

Collar w/ ball bearing inside



Retainer



Order No. (Rub collar only)	ØD	B
61600	75mm	16mm
61602	80mm	16mm
61604	85mm	16mm
61606	90mm	16mm
61608	95mm	16mm
61610	100mm	16mm
61615	4"	16mm
61611	103mm	15mm
61612	105mm	16mm
61614	110mm	16mm
61616	115mm	16mm
61618	120mm	16mm
61620	125mm	16mm
61622	130mm	16mm
61624	140mm	16mm
61626	150mm	16mm
61628	160mm	16mm
61630	170mm	16mm

Order No. (Ball bearing w/ retainer)	Ød
61650	1-1/4
61652	1
61654	30mm
61656	3/4

Order No. (retainer only)	Ød
61670	1-1/4
61672	1
61674	30mm
61676	3/4

**NOTE:** Bearing only (1-1/4 x 2-1/2) order #61660 (no retainer).

## DOUBLE T BUSHINGS

New

Ød	ØD	Tool No.	B
1/2	3/4	BU-918	1-5/16
3/4	1	BU-916	1-5/16
3/4	1-1/4	BU-914	1-5/16
1	1-1/4	BU-912	1-5/16

## LONG T BUSHINGS

New

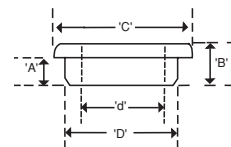
Ød	ØD	Tool No.	B
1/2	3/4	BU-928	1-5/16
3/4	1	BU-926	1-5/16
3/4	1-1/4	BU-924	1-5/16
1	1-1/4	BU-922	1-5/16

## SHAPER CUTTER 'T' BUSHINGS (WITH FLANGE), 2 REQUIRED PER CUTTER

New SIZES

Each item number consists of one of each.

Ød	ØD	A	Tool No.	B	C
1/2	3/4	5mm	BU-561	9mm	55mm
1/2	3/4	1/4	BU-550	11/32	1
1/2	1	5mm	BU-565	9mm	55mm
3/4	1	5mm	BU-564	9mm	55mm
3/4	30mm	5mm	BU-562	9mm	55mm
3/4	1-1/4	5mm	BU-570	9mm	55mm
3/4	1-1/4	1/4	BU-600	15/32	1-3/4
20MM	1-1/4	11/64	BU-724	1/4	1-3/4
1	1-1/4	3/16	BU-700	9/32	1-3/4
1	1-1/4	5mm	BU-568	9mm	55mm
1	1-1/4	1/4	BU-720	11/32	1-3/4
1	1-1/4	11/32	BU-750	1/2	1-3/4
1	1-1/4	1-5/32	BU-800	1-9/32	1-3/4
1	30mm	5mm	BU-560	9mm	55mm
1-1/8	1-1/4	13/64	BU-722	1/4	1-3/4
30mm	1-1/4	5mm	BU-566	9mm	55mm



REPLACEMENT PARTS

# Replacement Parts for Shaper Cutters



Rabbeting



Profiling



Door Making



Grooving



Jointing



Lamello®



ACCESSORIES

## SPACERS (SLEEVE BUSHINGS) FOR SHAPER CUTTERS

**New**

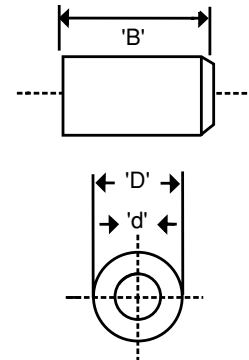
Ød	ØD	Tool No.	B
1/2	3/4	BU-902	.437 (7/16)
1/2	3/4	BU-900	.500 (1/2)
1/2	3/4	BU-910	.750 (3/4)
1/2	3/4	BU-920	1.620 (1/16)
1/2	3/4	BU-930	1.250 (1-1/8)
1/2	1	67220	.250 (1/4)
1/2	1	67221	.375 (3/8)
1/2	1	67222	.500 (1/2)
1/2	1	67223	.750 (3/4)
1/2	1	67224	1
3/4	1	67230	.250 (1/4)
3/4	1	67243	.375 (3/8)
3/4	1	BU-904	.437 (7/16)
3/4	1-1/4	67225	.250 (1/4)
3/4	1-1/4	67226	.375 (3/8)
3/4	1-1/4	BU-906	.437 (7/16)
3/4	1-1/4	67227	.500 (1/2)
3/4	1-1/4	67228	.750 (3/4)
3/4	1-1/4	67229	1
3/4	1-1/2	67241	.250 (1/4)
3/4	1-5/8	67242	.250 (1/4)
3/4	1-7/8	919	.250 (1/4)
1	1-1/4	BU-908	.437 (7/16)
1	1-1/2	67231	.250 (1/4)
1	1-1/2	67232	.375 (3/8)
1	1-1/2	67233	.500 (1/2)
1	1-1/2	67234	.750 (3/4)
1	1-1/2	67235	1
1-1/4	30mm	67244	.250 (1/4)
1-1/4	30mm	67245	.375 (3/8)
1-1/4	30mm	67246	.500 (1/2)
1-1/4	30mm	67247	.750 (3/4)
1-1/4	30mm	67248	1
1-1/4	1-3/4	67236	.250 (1/4)
1-1/4	1-3/4	67237	.375 (3/8)
1-1/4	1-3/4	67238	.500 (1/2)
1-1/4	1-3/4	67239	.750 (3/4)
1-1/4	1-3/4	67240	1

FOR 1/2" SPINDLES

FOR 3/4" SPINDLES

FOR 1" SPINDLES

FOR 1-1/4" SPINDLES



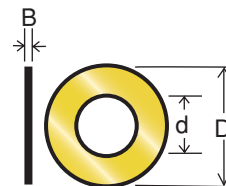
## 8 PC. SHIM SETS FOR SHAPER CUTTERS

**New**

Application: General purpose arbor shims used on assembly type tools that require cutter adjustment. Particularly useful after tool re-sharpening.

Diameters		Tool No.	8 Pc set includes:	
'd' Inside x 'D' Outside			'B' Shim Thickness	Qty.
3/4 x 1-1/4		67250	0.1mm (.0040)	1pc.
			0.2mm (.0078)	2pc.
			0.5mm (.0197)	1pc.
			1.0mm (.0393)	4pc.

Diameters		Tool No.	8 Pc set includes:	
'd' Inside x 'D' Outside			'B' Shim Thickness	Qty.
1-1/4 x 1-3/4		67252	0.1mm (.0040)	1pc.
			0.2mm (.0078)	2pc.
			0.5mm (.0197)	1pc.
			1.0mm (.0393)	4pc.



REPLACEMENT PARTS