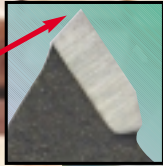




CONTRACTOR BLADES



Large Carbide Tipped
Micro-grain carbide



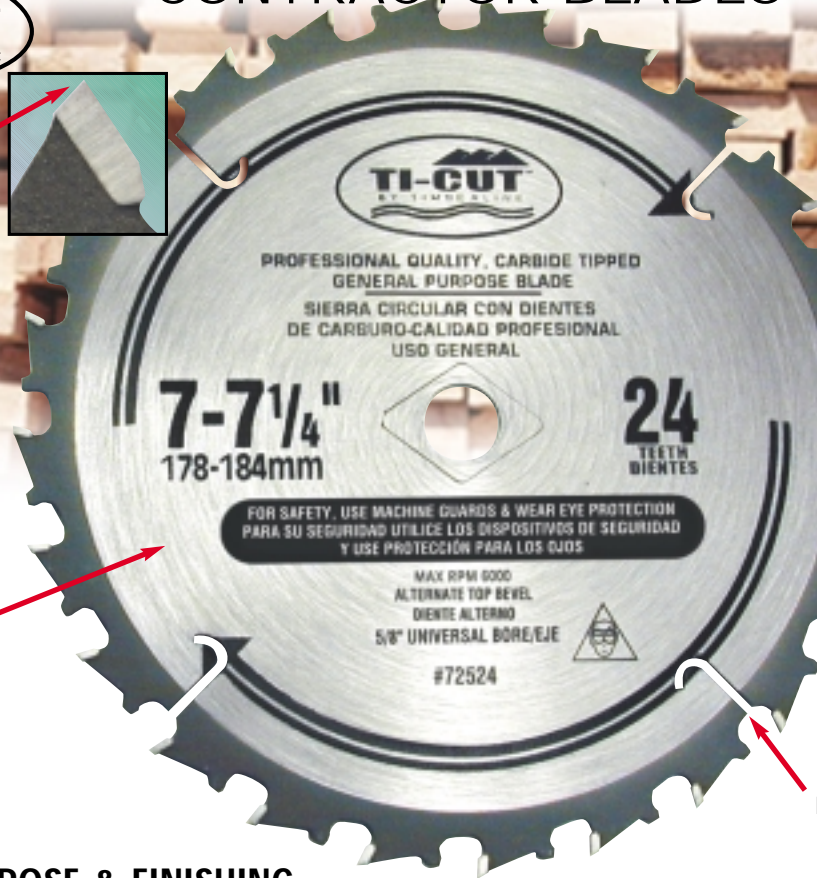
Thin Kerf for ease of cut and minimal waste

Hardened bodies Avoids warping



Anti-kickback design used for #72524 & #72540

Expansion slots



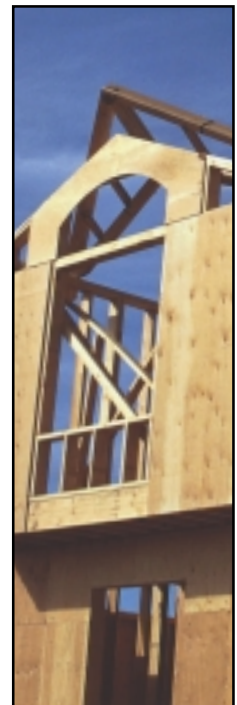
TI-CUT™

GENERAL PURPOSE & FINISHING

Heat-treated, hand-hammered bodies and large carbide tips, these blades are designed for the do-it-yourself market and contractors. Low retail price, very economical. Clamshell packed.

Tool No.	Dia.	Teeth	Grind	Bore
†72524	7-1/4"	24	ATB	5/8"◆
†72540	7-1/4"	40	ATB	5/8"◆
80032	8"	32	ATB	5/8"◆
80040	8"	40	ATB	5/8"◆
80060	8"	60	ATB	5/8"◆
82524	8-1/4"	24	ATB	5/8"◆
82540	8-1/4"	40	ATB	5/8"◆
10030	10"	30	ATB	5/8"
†10030-30	10"	30	ATB	30MM
10040	10"	40	ATB	5/8"
†10040-30	10"	40	ATB	30MM
10060	10"	60	ATB	5/8"
†10060-30	10"	60	ATB	30MM
10080	10"	80	ATB	5/8"
†10080-30	10"	80	ATB	30MM
12024	12"	24	ATB	1"
†12024-30	12"	24	ATB	30MM
12040	12"	40	ATB	1"
†12040-30	12"	40	ATB	30MM
12060	12"	60	ATB	1"
†12060-30	12"	60	ATB	30MM
12080	12"	80	ATB	1"
†12080-30	12"	80	ATB	30MM
12100	12"	100	TCG	1"
†12100-30	12"	100	TCG	30MM

† Anti-kickback design ◆ denotes 5/8" arbor with ◆ diamond knockout.



TI-CUT™ ALUMINUM & NON-FERROUS

Application: Specially designed carbide and blade geometry for cutting relatively thin-walled aluminum & non-ferrous extrusions & frames. A coolant or blade wax should be used and proper clamping devices employed.

Tool No.	Dia.	Teeth	Grind	Bore
*10181	10"	80	TCG	5/8"
†*10181-30	10"	80	TCG	30MM

*Non-Ferrous -5° Negative Hook Angle

†Blades with 30MM bore include the following reduction bushings: 30MM to 1", 30MM to 3/4" and 30MM to 5/8"

WARNING: Never attempt to cut ferrous metals (steel, iron, etc.) with these saw blades.



Contractor Series