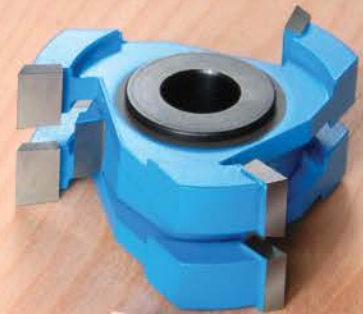
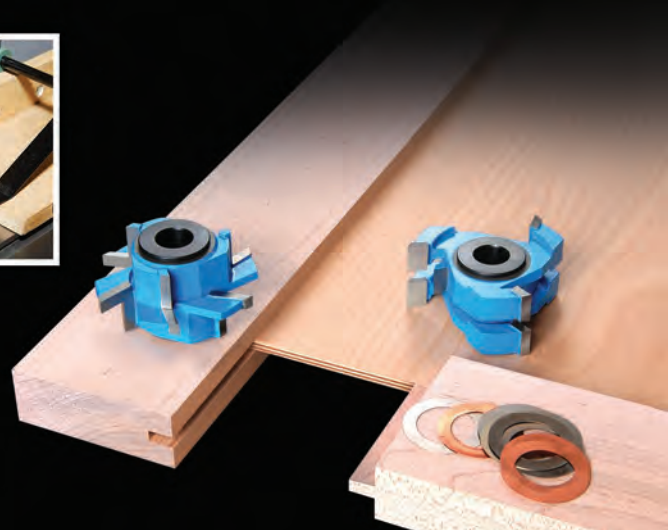




# Safety Guidelines for shaper cutters



# Safety Guidelines for shaper cutters



- 1.** Always make sure the machine is disconnected from the power source while going through these important steps.
- 2.** Always refer to your machine owner's manual prior to using your shaper. Learn the machines' applications and limitations as well as the potential hazards.
- 3.** Always wear eye and hearing protection. Keep clothing clear of cutting area.
- 4.** Make certain that the stock is not warped or twisted and is free of any knots, nails, screws, staples, grit or any other foreign object.
- 5.** Always examine the cutters for dull, worn or damaged knives. Never use a dull, worn or damaged tool.
- 6.** When using insert tooling, be sure all knives are installed correctly and securely tightened. Never make adjustments to cutters or knives while shaper is plugged in.
- 7.** Check the direction of the cutter rotation. The sharp leading edge of the knife should be the first to touch the material.
- 8.** Always be sure the spindle nut is securely tightened.
- 9.** Never feed the material in the same direction that the cutterhead rotates.
- 10.** Make sure that both the in feed and out-feed fences are in alignment with each other.
- 11.** Carefully rotate the spindle by hand to be sure that your cutters clear the fence and guards. Never make adjustments to shaper while cutters are turning or the power is on.
- 12.** Always use the safety guards supplied with your machinery. Never remove any safety guards or safety devices. Never make any cuts freehand!
- 13.** Allow at least a minimum safety distance of 4 inches between the cutters and your hands when cutting material. Always use push blocks or sticks when working with small or narrow pieces.
- 14.** Never stand behind the material being shaped.
- 15.** Avoid shaping stock less than 10 inches in length.
- 16.** Hold down the material firmly and feed it into the cutters with a constant and steady feed rate. Do not over-reach.
- 17.** Always feed the material against the cutters. Never remove any stock until the entire length has passed completely through the cutters.
- 18.** Failure to follow safety instructions and warnings could result in serious bodily injury or death.